



713-984-9441

Copyright© 2004 David Lott, Chris Muncy, Diesel Innovations, Inc. <http://www.dieselinnovations.com>

Documentation Version 1.0 101004

Chip Installation Instructions

IMPORTANT - IMPORTANT - IMPORTANT

Do NOT start the installation until these instructions have been fully read and fully understood! You must follow the sequence and directions for a successful installation.

Diesel Innovations WILL NOT warrantee damaged chips due to installation errors! 100% of all chips that leave Diesel Innovations are tested in trucks before they are shipped and guaranteed to work. If you do not agree to or understand these directions do not continue with installation.

Call 713-984-9441 for any technical questions.

REMOVING THE COMPUTER FROM THE TRUCK.

- 1 Remove the negative cable from BOTH batteries.
- 2 Put your truck keys in your pocket! The vehicle's key must be removed and the ignition must be off before starting the computer removal process and throughout the Diesel Innovations chip installation process!! (Or very bad things can happen).

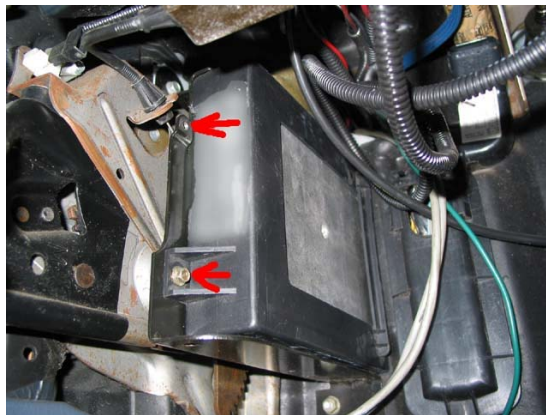
Diesel Innovations WILL NOT warrantee damaged chips due to installation error

Raise the hood and look underneath the brake master cylinder next to the driver's fender. Locate the wiring harness with the 10mm bolt in its center. There are three different wiring harness blocks in this general area. Locate the one nearest the drivers fender! Completely loosen the 10mm bolt and pull the wiring block out of the computer.



1999 through 2003

- 4 Inside the cab locate the computer. The computer is located in front of the parking brake pedal, and to the far left of the under dash area.



There are two 7mm bolts holding the black plastic computer sleeve to the metal computer-mounting bracket at the rear of the computer. Remove these first. Pull the plastic PCM cover towards the right about 2 inches out. Then pull towards you. The PCM should come out easily. If not, open the plastic box up a bit more. Note how the computer is oriented in the black plastic sleeve for reinstallation purposes later.

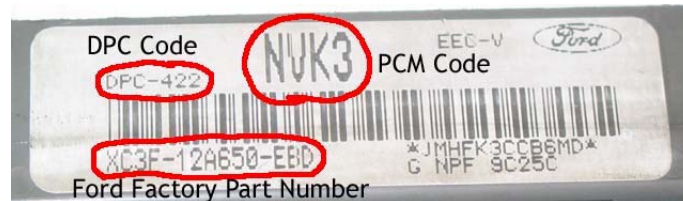
1994 Through 1997

There are 2 10mm nuts that hold the pcm in to the firewall. After removing the wire harness, remove these 2 nuts and pull the pcm out through the firewall in to the engine compartment. You might have to depress the inner fender well in to get enough clearance to get the pcm out.



IDENTIFYING YOUR PCM CODE

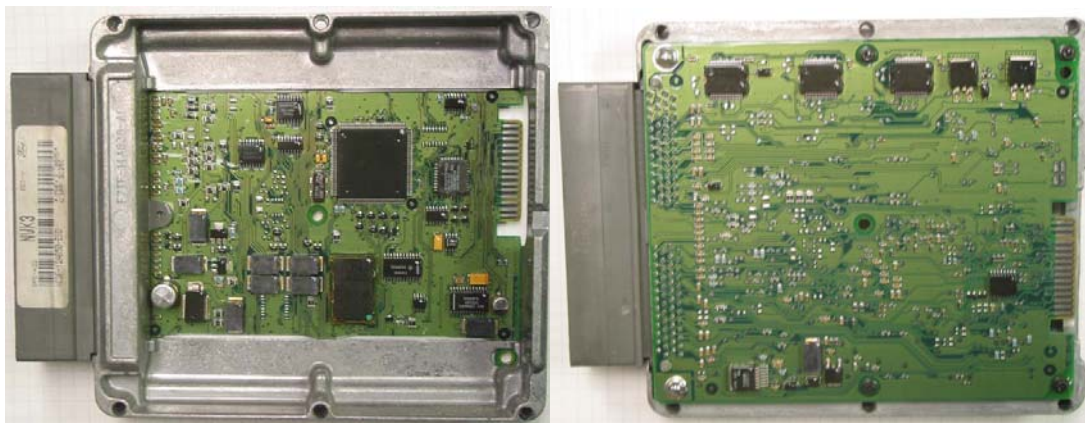
- 1 Once the PCM has been removed, there will be a large sticker on the end of the PCM.



This contains the PCM, or Catch code, the DPC (program family) code, and the Ford factory part number for the PCM. The PCM code and the DPC code are what are important in determining what code set to use for your vehicle.

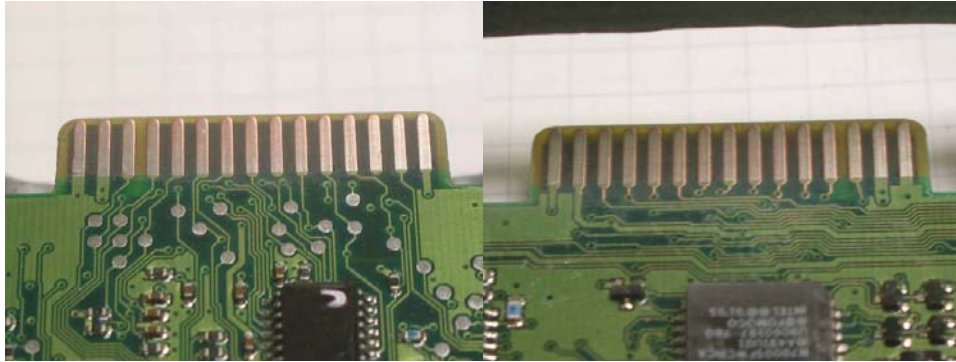
COMPUTER CONNECTION PREPARATION

- 1 Find a well lit dry, and clean work area. This is very important. Remove the black plastic access port cover on the end of the computer opposite of the wiring block connector.
- 2 After removing the cover, the printed circuit board edge connector will be visible to you. This **MUST BE CLEANED** completely or your Diesel Innovations Chip will not operate correctly. The edge connector has both a top and a bottom, both must be cleaned for a good connection. In order to do this, remove the 6 screws holding the PCM halves together.

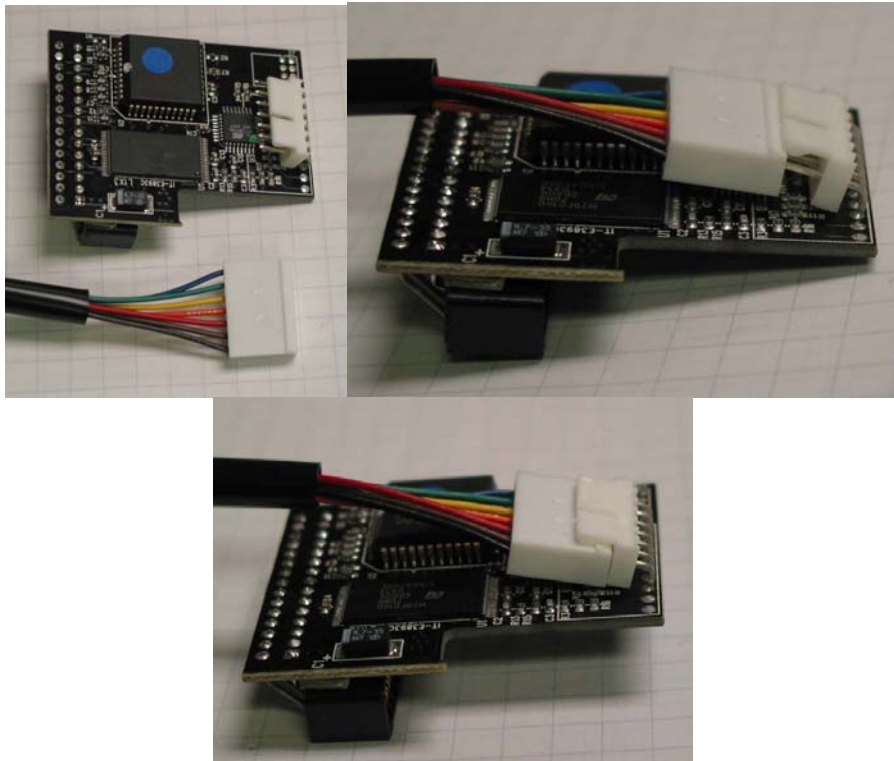


- 3 The edge connector is coated with a clear lacquer and sometimes a silicone grease covering. Remove the silicone coating with a clean soft cloth dampened with brake cleaner, lacquer thinner, alcohol, or carburetor cleaner.

DO NOT push down on the printed circuit board with enough force to crack the board!! After removing the silicone, use a scotch bright pad to remove the lacquer coating. Sometimes applying more of the brake cleaner will aid this process. DO NOT spray any cleaning chemicals into the computer!! Finally wipe the edge connector dry with another clean soft cloth and check for any debris you find. NOTE - DO NOT erode any of the silver material on the edge connectors while cleaning the contacts of silicone or lacquer coatings. STOP when you can see copper beneath the silver contacts.



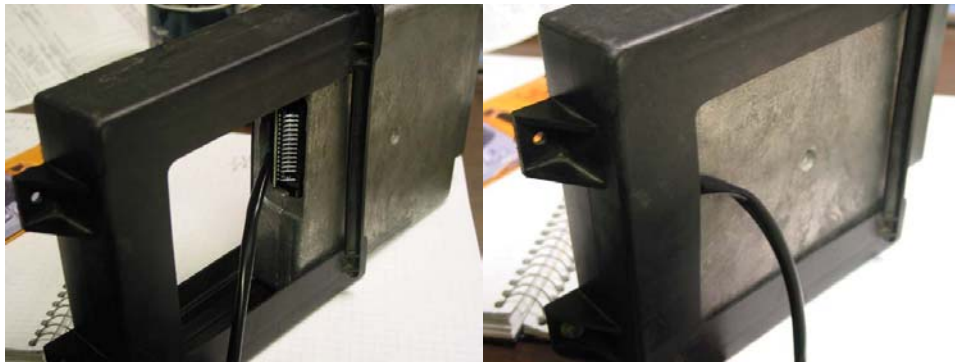
4 Once you are sure none of the coatings remain on the edge connector you are ready to install your Diesel Innovations Chip. Install the cable for the switch on the chip.



Press the chip into place on the edge connector until it bottoms out on the end of the circuit board.



The Diesel Innovations Chip should be flush with the top, bottom and edge of the computer metal case, if not you have installed your Diesel Innovations Chip backwards. Remove and re-insert the chip so that it is flush with the top, bottom and edge of the computer case. The only portion of the Diesel Innovations Chip that is not flush with the computer case will be the side with the Diesel Innovations logo. Finally use duct tape to secure your chip to the computer case by using one wrap of tape over the chip and over the left and right side of the computer. **REMEMBER: 95% of associated installation problems are due to incomplete edge connector cleaning.** Slide the computer back into the black plastic cover.



Make sure that you run the switch cable from the chip under the chip when you put the pcm back in the black plastic cover. You can cut a slot in the plastic cover to allow the switch wire to gain additional length if necessary.



REINSTALLATION OF THE COMPUTER

- 1 From inside the truck, install the computer into the metal bracket and push the computer through the rubber grommet in the trucks firewall. The bar code on the computer has to face the driver's side fender when installed correctly. Tighten the 7mm nuts.
- 2 Under the hood, reconnect the wiring block and snugly tighten the wiring block 10mm bolt. Reconnect your negative battery terminals. Start the truck and observe the "check engine light".
The "check engine light" should turn off. If the check engine or other lights are on, the computer is in limp mode and your contacts were not sufficiently cleaned. Retrace all the removal, cleaning, and reinstallation steps to insure your accuracy. When everything is clean, reinstall and restart the truck. Almost always the limp mode is activated by dirty or poor terminal contacts. Call Diesel Innovations customer service if you have any questions at 713-984-9441.
- 4 Enjoy the performance and power of your new Diesel Innovations Chip!!
Give us a call for any other diesel truck product you may need in the future.

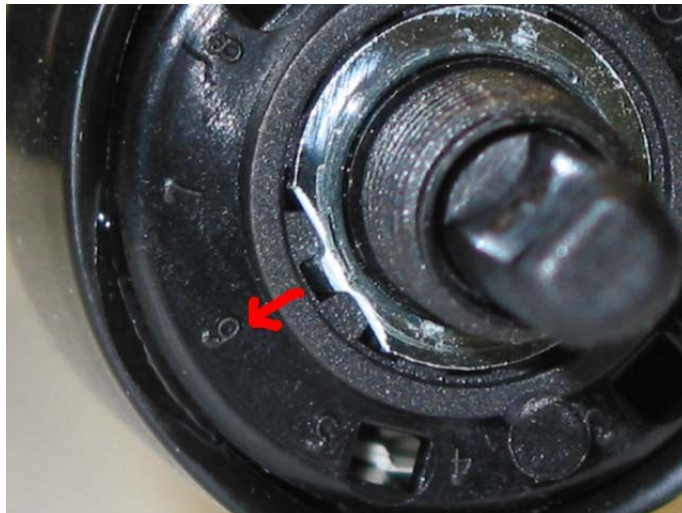
SWITCH DETAIL



This switch has the capability of having 1 to 6 positions, depending on the index tab.



The index tab is placed in reference holes in the switch to coincide with the given amount of programs programmed in to the chip.



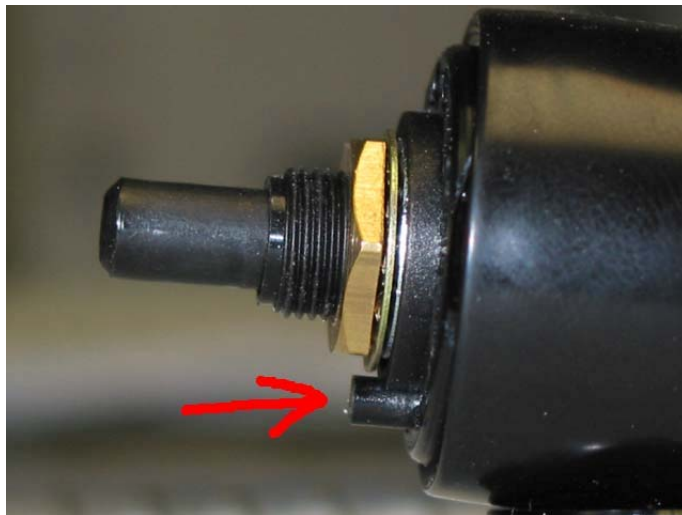
The above picture shows the tab of the index ring in the #6 index hole, allowing for 6 positions.



The above picture shows the tab of the index ring in the #4 index hole, allowing for 4 positions.

If you have to adjust the index ring, or the index ring falls out while installing the switch, pull the ring completely off of the switch, turn the switch fully counter-clockwise, then place the index ring in the correct hole for the number of programs programmed in to your chip.

If your switch still has the black tab still in place as show in the picture, take a pair of side cutters and cut it off flush.



TYPICAL SWITCH MOUNTING OPTIONS

